



Return to nature
it's so simple

Lifestyle

Create a green living lifestyle of your own. We offer a complete package to help you achieving an ultimate green living. Green plants against the wall or above the roof? Make your choice. Having both is obviously a perfect choice. Check out our **Green Wall** and **Green Plant**.

Easy

It's easy. It doesn't take much to make your life easy. Leaf is providing a complete solution with a team of well-qualified experts. Harvest solar light with **Leaf Solar Panels** to generate electricity via renewable Solar Energy. Consult our team for the best advice.

Return to nature
it's so simple

Return to nature
it's so simple

Advanced

Touch a button and enjoy yourself. Leaf's intelligent control unit and leaf-free technology advancement can brighten your life. Let the sunshine do the rest. Visit our showroom to experience the atmosphere.

Taiwan
Japan
Germany
advanced technology

Return to nature
it's so simple

Fun

Smudge on the wall, floor, and wallpaper? No. Choose the powerful green-friendly leaf solution. Have you ever thought of reusing the waste water? Or ever wondered how to make your home cooler without air conditioning? Reuse water through the leaf rainwater for multi-purpose cleaning, whilst Water Retention System evenly distributes water and flow it back to the soil, bringing back the natural ecology and temperature. Leaf Pump expends indoor and water temperature for various usage. It is environmental friendly and yet, it makes the most out of energy savings. **SIGN UP A TOTAL PACKAGE TODAY AND ENJOY GOOD DISCOUNTS!**

Smart Home

Return to nature it's so simple

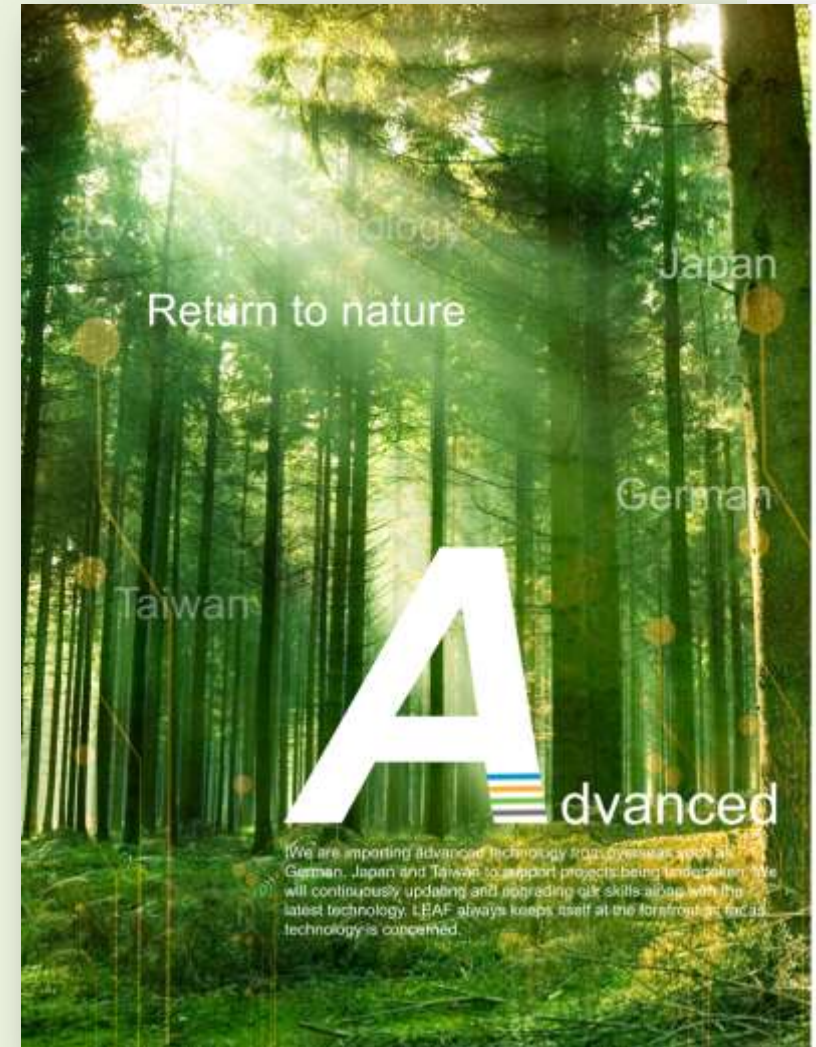




Introduction

Established in 2003, Lian Shun Technology started in manufacturing, alongside with its mother company – Feiti (M) Sdn Bhd, a metal stamping company founded in Taiwan since 1969.

Being a green lover and determined to become a green contributor, Lian Shun is revamping its business in providing green living concept and lifestyle to more people. Therefore, a new label “LEAF” is set up under Lian Shun to offer solutions and consultations to obtain affordable green homes.





Intelligent Green Building

Let the combination of technology and nature brings us the best out of our livings, to achieve the basic six major requirements of green living: Safety, Convenience, Healthy, Energy Efficiency, Comfortable, Everlasting.

Our engineering team in Lian Shun Technology endeavors to simplify the vague understanding of green concepts, to be more conceptual based on product design, so that it can easily be understood in terms of its functions and how can it be achieved. With the application of statistical function of the smart home system, performance analysis and reports of solar energy, LED lighting, green vertical walls, green roof, heat pump water heater, and even rainwater harvesting system as well as water retention, all can be demonstrated and reflected directly on your screen, either by using a smart phone or an IPAD. Just touch a few buttons and you are able to experience and enjoy the most comfortable natural environment.

To return to nature and enjoy greener livings, the four key words say them all: Lifestyle, Easy, Advanced and Fun.

LEAF will provide all you need in green living.

Lifestyle

Pursuing ideal natural living with elegance lifestyle....that's what we insist on lifestyle living. It is also our commitment to provide you the best lifestyle living.

Easy

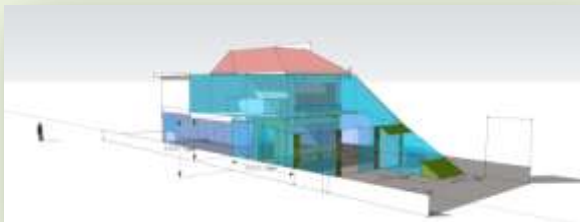
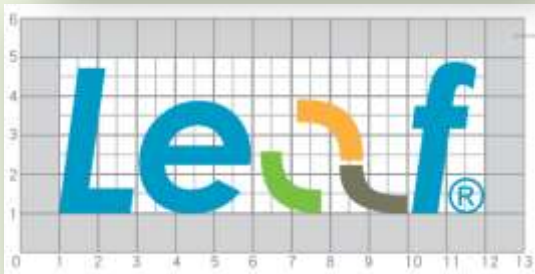
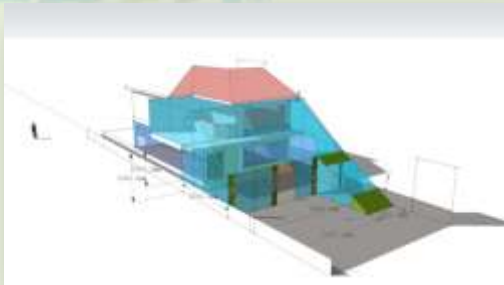
Just touch a few buttons and let the intelligent system takes over the duties. Let your finger do the job.

Advanced

Combine the nature and advanced technology to create a futuristic new living lifestyle. You will be surprised how much you can enjoy, once they are put together.

Fun

When things are under your control, life will be more meaningful and interesting. Enhance your lifestyle and experience a new, yet very different atmosphere.



Products & Services

We offer various types of green products and attempt to package them together, and ultimately, sell them as a concept i.e. Intelligent Green Building. Our products include:

- Solar Panel
- Green Wall
- Green Roof
- Smart Home
- LED
- Rainwater Harvesting
- Water Retention System
- Heat Pump



Intelligent Green Building Consolidation of Green Products Experience the Genuine Feelings Practical Test of the Reality

LEAF solves your psychological Doubt

We will take all the green recycle products, researching each and every one of the product's features, and will examine all the details, efficiency and investment benefits, display and put it in figures, to inform you of the differences, and using the high-tech , wireless scientific equipment, to monitor all the green recycle products, we strongly believe "seeing is believing" !

We know which details you are particularly mind.

In fact, what we mind and concern isyour satisfaction



- **Solar energy , how much electricity being generated, how much money has been saved ?**

Take it easy, the wireless control panel will explain to you accurately how much electricity has been generated, and also the monthly effect of the electric generated . This result will be compiled through the internet passage and then send to our monitor centre (with your permission), and if there is anything unusual, we will keep you informed immediately and you need not worry!

- **LED really saves electricity ? What's the bill for this month? How long it takes to recover the cost?**

The wireless electricity meter panel will notify you in advance your electric bill, in fact, right at the moment the meter is installed, you could even notice the bill differences instantly!

- **The Smart Home wireless system is so cool ? Is it save to use and cost effective?**

Just press the buttons with your fingers slowly, all the pictures, all the figures, will instantly displayed – "safety", "healthy", "convenient" , "comfortable", "energy savings", "sustaining"

Visit LEAF showroom and experience yourself directly the demonstration , by processing you a full set of information.

- **Green wall, Green roof, what is the value ?**

Beside compliments from friends around, you will get the room temperature reading being disclosed to you that your indoor temperature has reduced.(according to statistics, every drop of 1 degree is equivalent to a 5% reduction of air-conditioner electricity consumption)

- **Rain Water Harvesting, what are the benefits?**

When the water supply stops, and your house is the only one that still has water to flush the toilet, then you may imagine how convenient it is! At this crucial moment of activating your rain water harvesting system, you will be most satisfied, LEAF wireless remote control system will notify how much water has been conserved , as well as how much has been saved !

- **The concept of Water Retention/Conservation System**

Check this out, why is it that there is no drain in the jungle? Why is it that the trees in the jungle are thriving prosperously with without watering? The answer is, when the nature rains, the soil retains the water ,when the soil is full of nutrients, plants will definitely prosperous; so, when you walk through the jungle, the feeling of serene environment , the soil cooling effect takes place . To make your backyard similar to the jungle absorbing water module, and even adjusting the temperature, just let LEAF proves to you, your backyard will become like the jungle with flourishing living plants.

- **Is Heat Pump a cheaper option?**

Don't worry, we are more concerned how it can save you even more , through the remote control of the wireless meter , a complete report of the electricity usage well be presented, and we ensure you will be deeply satisfied .





Smart Home

Smart home will be the future of homes. Equipped with the latest technology, smart home has the potential to become a reality in the new home market.

Smart home is a home that emphasizes on safety, security and comfort with modern technology integrated in it. The five important elements of a smart home are personal computing, home automation, entertainment, telecommunications and security. This kind of centralized management will allow our domestic appliances and services to communicate with each other and make electronic decisions on our behalf such as selecting TV programs, suggesting which groceries to buy, monitoring and managing energy consumption for optimum efficiency, controlling environmental conditions, and delivering news and information to us wherever we are and whenever we need it. Existing equipment in the home can also be adapted to provide more functions i.e. multi-tasking.

LEAF's smart home system is well established and easy to fix, without any major touch up required. Check out from the following related pages.





About HomeScenario

HomeScenario, Inc. offers easy-to-use and affordable smart home solutions. Integrating technologies of RF wireless control and broadband networking, the HomeScenario solutions make comfort, convenience, safety, security, and eco-friendliness available for homeowners without the need of extensive and costly remodeling. The HomeScenario products include Scenario Hubs, Scenario Detectors, Scenario Switches, and Scenario Control Points. All of them are designed to work seamlessly with existing home systems such as lighting, thermostat, door access, drapery, security monitoring, A/V equipment, and more. No matter where you are, HomeScenario solutions always keep you aware of current status of your house, enable you to effortlessly control your home systems, and optimize your home energy consumption, simply through one-touch control of scenario keypad, remote, mobile phone, or touch screen. Please visit www.homescenario.com for more information.



Recommended HomeScenario Products for Green Home

Your home can be made eco-friendly and comfortable with HomeScenario Green Home Solution. Whether it is simply controlling the house lighting or using a more complex combination of sensor, switch/dimmer, thermostat, and motorized window shades, with HomeScenario it is easy to find appropriate products that fit your requirements perfectly. And because HomeScenario solution is affordably priced and easy to install, your quest for green lifestyle can be fulfilled practically and effortlessly with reasonable budget.

- HomeScenario Green Home Solution

Conserving energy isn't just for your conscience and the environment. It's good for your money too! HomeScenario brings you green living by helping you manage lighting, electric appliance and room temperature. Using our green home solution, your lifestyle can always remain uncompromised with your energy footprint being significantly minimized.

- Products recommended

- HomeScenario Advanced Scenario Hub
- HomeScenario Scenario Detectors
- HomeScenario Switch & Dimmer Modules
- HomeScenario In-wall Switches & Dimmers
- HomeScenario Control Points
- Wireless Thermostat
- Wireless Window Blinds and Shades
- Touch Screen Controller



- Why Green Home ?

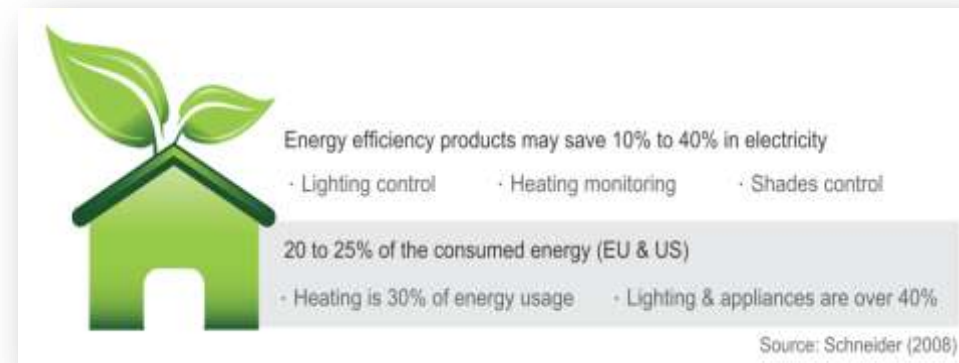
That energy efficiency is high on the agenda of most people is now undoubted. For many, energy measures revolve around the consideration of thermal issues in the building fabric with remedies such as insulation, glazing, and heat loss countermeasures. For others, it is lighting, albeit often constrained to merely installing low consumption systems. All of the above are laudable and necessary, but they are actually only passive countermeasures that largely mitigate energy loss rather than the energy deployed.



- Figure1 Energy Efficiency for Residential

Current technologies allow us to target 30% savings through efficient usage of energy (see Figure1). In order to achieve this benchmark, an active and managed approach is essential.

Lighting control is a good example. According to U.S. Department of Energy, lighting accounts for up to 15% of electricity bills in an average home. There can be substantial savings to be made by turning off lights that aren't needed to ensure all lights are off when you leave your room or your house. Incandescent lights can be programmed to a preset dim level which not only saves electricity but also extends lamp life (see Figure 2).



- Figure2 Energy Saving Effect for Dimmer

On the other hand, heater and air-conditioner consume a lot of energy as well. In many cases the HVAC is working at high power while the window or door is left open. Properly programmed thermostats allow you to tune the systems to reduce output when they are not needed, like when no one is home during the day or at night when everyone is sleeping.

Save Energy on Your Electric Bill and Increase Incandescent Light Bulb Lifespan by Dimming

Lights dimmed this much	Electrical Savings	Extends Bulb Life
10%	10%	2X
25%	20%	4X
50%	40%	20X
75%	60%	>20X

Source: American Lighting Association

Combined with controlling other systems such as fans, window shades, homeowner can live very comfortably while maintaining green lifestyle with properly managed HVAC system.

● **How much can you protect the environment while saving money with HomeScenario Green Home Solution?**

HomeScenario seamlessly integrates its Scenario Hub with lights, electrical appliances, door/window sensors, shades, and HVAC systems in your house. Devices such as light switch, dimmer, motion sensor, thermostat, appliance module, motorized window shades, etc. are applied to generate the green scenarios. Here are just a few examples:

Type	Scenario	Type	Scenario
Lighting	<ul style="list-style-type: none"> Lights automatically turned on when you need them and off when you don't, e.g.: <ul style="list-style-type: none"> > Lights on/off at preset date/time > Lights on/off according to brightness level > Lights on/off according to room occupancy > Lights on/off according to door/window position Automatically dim lights to a preset level Turn all lights off to make sure there is no light left on when you leave home 	Temperature	<ul style="list-style-type: none"> Tune the thermostat to an optimal level that balances comfort vs energy efficiency according to: <ul style="list-style-type: none"> > Room occupancy > Season, time of a day > Outside temperature > Position of door/window > Event/scenario setting Control both window shades and thermostat for maximum energy efficiency while still maintaining a comfortable environment in your home Turn on the air-conditioner right before you go home
Appliance	<ul style="list-style-type: none"> Completely switch off electrical home appliances during standby Switch off appliances when you are away from home Switch off receptacles even if with power adapters plugged in 	Window	<ul style="list-style-type: none"> Window shades & blinds automatically open or close according to the sunlight to reduce demands on lighting and air-conditioning system Before turning on the air-conditioner, automatically open/close your windows when outdoor temperature fits your comfort more

- **It Doesn't Cost You Too Much**

HomeScenario seamlessly integrates its Scenario Hub with lights, electrical appliances, door/window sensors, shades, and HVAC systems in your house. Devices such as light switch, dimmer, motion sensor, thermostat, appliance module, motorized window shades, etc. are applied to generate the green scenarios. Here are just a few examples:

Home automation and control used to cost hundred thousands of dollars and many times required the extensive home remodeling/rewiring and the use of a professional contractor to perform the installation. Money, time and efforts were involved in having a home automation system.

Things have changed! Deploying 2-way wireless technology, the HomeScenario solutions can achieve the same or even better integration of automation without extensive remodeling or system programming. Not only can user easily adopt HomeScenario solution to meet their unique lifestyle, but the modular design also enables them to start from a basic set of system and expand as requirements grow. The retrofit installation allows users to invest on green home at any time. Lots of money, time, and installation efforts are saved. Having an energy-efficient, automated home isn't the privilege for the rich people any more. For mainstream consumers, the investment is limited while the returns are very significant.



- | No Rewiring Needed
- | Easy to Install, Easy to Use
- | Multi-Protocol, Scalable Solutions
- | Control from Anywhere

Advanced Scenario Hub

HSC-200

Product Description

The HomeScenario HSC-200 is a networked Scenario Hub for homeowners to control their houses from anywhere. It is designed to be smoothly integrated with a variety of home systems such as lighting, thermostat, door access, window blinds, security monitoring, A/V equipment, and more. With the HSC-200, homeowners can easily control home systems, arrange home scenarios, or get event notifications, by simply clicking a button. For installers, the HSC-200 can be applied to the following solutions:

Green Home

Security & Surveillance

Advanced Home Automation

In addition to connecting hardwired components, the HSC-200 is deployed with wireless control technologies such as Z-Wave, so that no extensive interior rewiring/remodeling is needed during the installation of the HSC-200 and its peripheral devices. Accordingly, homeowners can start from a basic package and expand the investments as requirements grow, or they can easily modify/change device locations and/or configurations, thereby minimizing total cost of ownership and extending the lifecycle for their systems. The HSC-200 can work with a number of scenario controllers or devices such as sensor, switch, dimmer, HVAC, in-wall controller, remote, power meter, etc. Custom installers and homeowners have multiple choices to design their home control solutions by integrating the HSC-200 with its peripherals as well as those from 3rd party vendors. For ease-of-use, the HSC-200 provides flexible architecture which greatly simplify device management, scenario editing, and user interface (UI) presentation, minimizing the installation efforts. Homeowners, in most cases without sophisticated technology background, can enjoy the features of HSC-200 by simply clicking customizable buttons on scenario key pad, remote, or touch screen.



HomeScenario Smart Audio/Video Solution

Tired of using four different remotes and manually adjusting all the lights, window shades, and thermostats? HomeScenario provides an easy-to-deploy and cost-effective solution for automating your home theater or your office meeting room. With one-touch you can turn on the TV or projector, DVD player, stereo system, then dim the lights, lower the projector screen and shades, and set the most comfortable temperature to create the perfect ambience. All of these can be well achieved – and the setup is easier and more affordable than you can ever imagine.

Whether you are at home or in the office meeting room, HomeScenario smart audio/video solution always brings you comfort and convenience with the most appropriate scenario through a simple click.

How It Works?

Whether you would like to watch DVD at home, or make presentation in the meeting room, just click a scene button on the HSK-100Z portable controller, then everything will be all set. As the control station, the HSK-200Z will receive the command from HSK-100Z and bring you the scenario by automatically turning on the TV or project, DVD player, audio system, then lowering the projector screen and window shades, dimming the lights, tuning the thermostat. You don't have to worry about picking up wrong remote control, or pressing wrong power key. The scenario will be there as it should be.



The HomeScenario Smart Audio/Video Solution provides you the scenarios that best fit your requirements for home theater and meeting room:



Green Switch

Why Green Home ?

That energy efficiency is high on the agenda of most people is now undoubted. For many, energy measures revolve around the consideration of thermal issues in the building fabric with remedies such as insulation, glazing, and heat loss countermeasures. For others, it is lighting, albeit often constrained to merely installing low consumption systems. All of the above are laudable and necessary, but they are actually only passive countermeasures that largely mitigate energy loss rather than the energy deployed.



Model Number	Version	Product Name & Photo	Description	Features	Power	Dimensions
HGS-100Z	US, EU	Z-Wave Green Energy Switch 	The HGS-100Z is a Z-Wave enabled device which allows you to control the on/off status of a device wirelessly. It can also report real-time or accumulated power consumption for the plug-in home appliance.	<ul style="list-style-type: none"> Wirelessly controls the on/off status of plug-in electrical appliances Reports real-time or accumulated power consumption for the plug-in home appliance Small form factor that is not intrusive and does not block other outlets Also functions as a Z-Wave repeater to extend the RF coverage Supports Z-Wave 2-way mesh networking, RF range up to 30m indoors Easy to install and associate with Z-Wave host controller or Z-Wave device Max loading 15A 	100-240V 50-60Hz	86x54x30 mm
HGS-110Z	US, EU	Z-Wave Green Energy Switch Module 	The HGS-110Z is a Z-Wave enabled device which allows you to control the on/off status of a device wirelessly. It can also report real-time or accumulated power consumption for the plug-in home appliance.	<ul style="list-style-type: none"> Wirelessly controls the on/off status of plug-in electrical appliances Reports real-time or accumulated power consumption for the plug-in home appliance Small form factor and can work with legacy single-pole wall switch for local control Also functions as a Z-Wave repeater to extend the RF coverage Supports Z-Wave 2-way mesh networking, RF range up to 15m indoors Easy to install and associate with Z-Wave host controller or Z-Wave device Max loading 10A 	100-240V 50-60Hz	52x49x18.5 mm
HGS-200Z	US, EU	Z-Wave Green Energy Dimmer 	The HGS-200Z is a Z-Wave enabled device which allows you to control the on/off/dim status of a device wirelessly. It can also report real-time or accumulated power consumption for the plug-in home appliance.	<ul style="list-style-type: none"> Wirelessly controls the on/off or dim up/down status of plug-in electrical appliances Reports real-time or accumulated power consumption for the plug-in home appliance Small form factor that is not intrusive and does not block other outlets Also functions as a Z-Wave repeater to extend the RF coverage Supports Z-Wave 2-way mesh networking, RF range up to 30m indoors Easy to install and associate with Z-Wave host controller or Z-Wave device Max loading 15A 	100-240V 50-60Hz	86x54x30 mm
HGS-210Z	US, EU	Z-Wave Green Energy Dimmer Module 	The HGS-210Z is a Z-Wave enabled device which allows you to control the on/off/dim status of a device wirelessly. It can also report real-time or accumulated power consumption for the plug-in home appliance.	<ul style="list-style-type: none"> Wirelessly controls the on/off or dim up/down status of plug-in electrical appliances Reports real-time or accumulated power consumption for the plug-in home appliance Small form factor and can work with legacy single-pole wall switch for local control Also functions as a Z-Wave repeater to extend the RF coverage Supports Z-Wave 2-way mesh networking, RF range up to 15m indoors Easy to install and associate with Z-Wave host controller or Z-Wave device Max loading 10A 	100-240V 50-60Hz	52x49x18.5 mm
HGM-310Z HGM-320Z HGM-330Z	US, EU	Z-Wave Green Energy Monitor 	The HGM-310Z/320Z/330Z is a Z-Wave enabled device which allows you to monitor the energy consumption of the whole house. It can report real-time or accumulated power consumption for home controller.	<ul style="list-style-type: none"> Reports real-time or accumulated power consumption for the whole house Easy to install by clipping each clamp of the HGM-310Z/320Z/330Z around the incoming wires that connect to the main circuit breaker from the main wire going into the box Supports Z-Wave 2-way mesh networking, RF range up to 30m indoors Easy to install and associate with Z-Wave host controller or Z-Wave device Max measured current: 200A 	4x AA	109x68.5x32.5 mm



HSC-200

Advanced Scenario Hub

- Central control station for various home systems, e.g. lighting, thermostat, door access, window shades, security monitoring, A/V equipment
- Supports multiple protocols, such as IP, Z-Wave, IR
- Universal remote control with built-in IR code database and IR learning
- Integration with multiple wired input/output and serial connections
- Control via PC, touch screen, smart phone, keypad, remote, etc.
- Easy to associate with HomeScenario peripherals and an array of 3rd party devices
- Powerful web-based tool to facilitate device management & scenario editing
- User interfaces can be easily customized by installer to fit user's preference
- From anywhere via the Internet, user can receive event notifications, trigger scenarios, or control individual home system



HSC-40

Network Scenario Gateway

- Bridges between IP and RF networks
- Provides digital input/output wired control interfaces
- Embedded with scenarios for smart home applications
- Supports Z-Wave 2-way mesh networking
- Wireless range up to 30m indoor
- Easy to install and associate with peripheral devices
- Available for US (908.42MHz) and EU (868.42MHz)



HSC-30

Network Scenario Extender

- Bridges between IP and RF networks
- Easy to install and associate with host controller, and to enlarge the coverage for home automation
- Can be applied to larger installations e.g. hotel, campus, office
- Supports Z-Wave 2-way mesh networking
- Wireless range up to 30m indoor
- Available for US (908.42MHz) and EU (868.42MHz)



HSD-100Z

Z-Wave Door/Window Sensor

- Detects when your door/window is open or closed
- Sends alert message for home monitoring, or triggers pre-associated scenarios/devices
- Supports Z-Wave 2-way mesh networking
- Easy to install and associate with host controller
- Wireless range up to 30m indoor
- Long battery life (3xAAA)
- Available for US (908.42MHz) and EU (868.42MHz)



HSD-600Z

Z-Wave Water Sensor

- Detects if there is water on the floor
- Used for indoor or outdoor
- Supports Z-Wave 2-way mesh networking
- Easy to install and associate with Z-Wave host controller or Z-Wave device
- Wireless range up to 30m indoor
- Long battery life (3xAAA)
- Available for US (908.42MHz) and EU (868.42MHz)



HSD-200Z

Advanced Z-Wave Motion Sensor

- Detects motion or activity in your empty house
- Changeable lens which facilitates mounting either on the wall or on the ceiling
- Embedded light sensor enables motion detection according to darkness level
- Sends alert message for home monitoring, or triggers pre-associated scenarios/devices
- Supports Z-Wave 2-way mesh networking
- Easy to install and associate with host controller
- Wireless range up to 30m indoor
- Long battery life (3xAAA)
- Available for US (908.42MHz) and EU (868.42MHz)



HSD-300Z

Z-Wave Temperature/ Humidity Meter

- Monitors & displays temperature and humidity via LCD screen
- Sets max or min threshold limit for event or scenario trigger
- Used for indoor or outdoor
- Supports Z-Wave 2-way mesh networking
- Easy to install and associate with Z-Wave host controller or Z-Wave device
- Wireless range up to 30m indoor
- Long battery life (3xAAA)
- Available for US (908.42MHz) and EU (868.42MHz)



HSD-400Z

Z-Wave Power Detector

- Detects on/off status of plug-in electrical appliance
- Measures power usage and reports to HSC-200 Scenario Hub
- Triggers scenarios when plug-in appliance is turned on/off
- Also functions as a Z-Wave repeater to extend the RF coverage
- Supports Z-Wave 2-way mesh networking
- Easy to install and associate with Z-Wave host controller or Z-Wave device
- Wireless range up to 30m indoor
- Max loading 1,000 Watt
- Available for US (908.42MHz)



HSD-500Z

Z-Wave Light Sensor

- Monitors & displays darkness level via LCD screen
- Sets max or min threshold limit for event or scenario trigger
- Used for indoor or outdoor
- Supports Z-Wave 2-way mesh networking
- Easy to install and associate with Z-Wave host controller or Z-Wave device
- Wireless range up to 30m indoor
- Long battery life (3xAAA)
- Available for US (908.42MHz) and EU (868.42MHz)



HSW-100Z

Z-Wave Appliance Module

- Wirelessly controls on/off of plug-in electrical appliance
- Provides pass-through power outlet
- Also functions as a Z-Wave repeater to extend the RF coverage
- Supports Z-Wave 2-way mesh networking
- Easy to install and associate with Z-Wave host controller or Z-Wave device
- Wireless range up to 30m indoor
- Max loading 1,500 Watt
- Available for US (908.42MHz)



HSW-200Z

Z-Wave Dimmer Module

- Wirelessly controls on/off or dims up/down for plug-in lamp
- Provides pass-through power outlet
- Also functions as a Z-Wave repeater to extend the RF coverage
- Supports Z-Wave 2-way mesh networking
- Easy to install and associate with Z-Wave host controller or Z-Wave device
- Wireless range up to 30m indoor
- Max loading 300 Watt
- Available for US (908.42MHz)





HAS-100Z

Z-Wave Indoor Siren

- Sends 85dB siren alarm when being triggered
- Supports Z-Wave 2-way mesh networking
- Easy to install and associate with Z-Wave host controller or Z-Wave device
- Wireless range up to 30m indoor
- Used for indoor
- Long battery life
- Available for US (908.42MHz) and EU (868.42MHz)



HSK-10

IR Extension Cable

- Non-visible, high-output version compatible with Xantech 282M
- Clear adhesive film for attaching emitter to the IR window of controlled device
- Terminated with 3.5mm mono phone jack
- Connected to HSC-200 or HSK-200Z
- Length of wire: 6ft



HSK-15

IR Blaster Cable

- Powerful IR transmission cable which can send IR signals across a room
- Multi-directional IR output
- Blaster can be easily attached on the wall
- Terminated with 3.5mm mono phone jack
- Connected to HSC-200 or HSK-200Z
- Length of wire: 6ft



HSK-50Z

Z-Wave Portable Scenario Keypad

- Provides 4 buttons, each can be defined to trigger user-defined scenario
- Also works with host controller for Z-Wave device inclusion/exclusion
- Scenario buttons can be renamed to fit users' preference
- Supports Z-Wave 2-way mesh networking
- Easy to install and associate with host controller or Z-Wave device
- Wireless range up to 30m indoor
- Long battery life (1x Lithium)
- Available for US (908.42MHz) and EU (868.42MHz)



HSK-100Z

Z-Wave AV Scenario Controller

- Universal AV remote
- Also supports Z-Wave device/zone/scene control
- Support scenario buttons to trigger pre-configured scenarios
- Also works with host controller for Z-Wave device inclusion/exclusion
- Supports Z-Wave 2-way mesh networking
- Easy to install and associate with host controller or Z-Wave device
- Wireless range up to 30m indoor
- Long battery life (3x AAA)
- Available for US (908.42MHz) and EU (868.42MHz)



HSK-200Z

Z-Wave IR Control Station

- Receives RF commands and transmits IR commands, either by internal IR transmitter or via IR emitter/blaster cable (HSK-10/15)
- When acting as a host controller, arranges scenarios for lighting, AV system, projector screen, window shades, thermostat
- Embedded with IR database for AV system; supports IR learning
- Supports Z-Wave 2-way mesh networking
- Easy to install and associate with Z-Wave host controller or peripheral devices
- Wireless range up to 30m indoor
- Available for US (908.42MHz) and EU (868.42MHz)



HSK-300Z

Z-Wave I/O Controller

- Provides 4 digital inputs or 4 digital outputs
- Digital inputs can be connected to wired sensors
- Digital outputs can be used to drive equipment with digital contacts
- Also provides RS-232 serial interface
- Supports Z-Wave 2-way mesh networking
- Easy to install and associate with Z-Wave device or host controller
- Wireless range up to 30m indoor
- Available for US (908.42MHz) and EU (868.42MHz)



HSM-100

AC Motor Controller

- Plug-n-play and compatible with most 110VAC/230VAC tubular motors
- Provides manual up/down/stop buttons and RF remote control
- Max. loading: 4A
- Easy to connect with Z-Wave network through HSM-300Z
- Configurable operation modes



HSM-300Z

Z-Wave Motor Control Adapter

- Connected to HSM-100 to enable up/down/stop control over projector screen or window shades
- Supports Z-Wave 2-way mesh networking
- Easy to install and associate with Z-Wave device or host controller
- Wireless range up to 30m indoor
- Available for US (908.42MHz) and EU (868.42MHz)

HMI-200
Android/iPad平板电脑介面



HMI-100
Android/iPhone智慧型手机介面



Contract Procedure

- **Business negotiation procedure**

Residential categories: Understanding and identify customer needs, budget, usage purposes

Commercial categories: Company Overview, future growth rate, budget, philosophy and etc.

- **Preliminary proposal**

Budget setting, product proposal and quotation submission.

Site surveying, analysis and photos taking for reference.

Preliminary planning and preparing the draft of design.

- **Contract**

Advance payment of 50% total amount upon contract signed. Draft reviewing for necessary amendments, final verification on the construction details and explanations, construct Gantt Chart of Progress.

- **Construction site**

Launch construction according to design drawings and progress schedule.

Advance payment of 40% of total amount upon shipment of equipment along with installation of equipment, program setting and testing.

- **Completion**

Verification and acceptance of work completion with issuance of guarantee letter. Final settlement of 10% of total amount upon completion.



Return to nature it's so simple

